

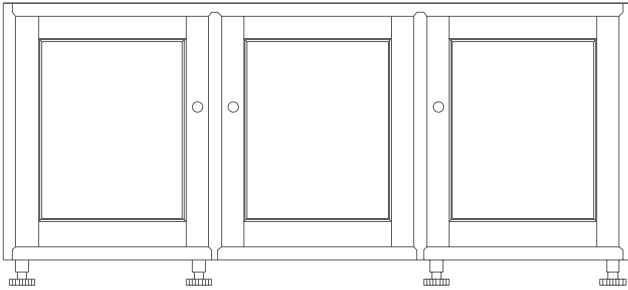
# CULSHAW®

KITCHEN MAKERS

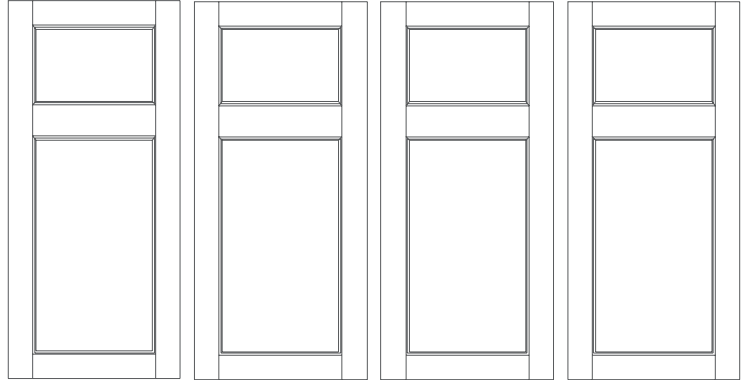


FEARNLEY GRAND/HIVEHAUS GRAND  
ASSEMBLY INSTRUCTIONS

## BASE



## DOORS + LARDER RACKS



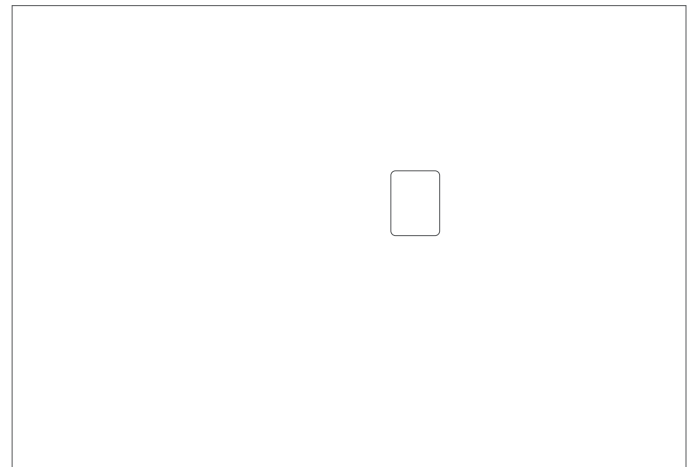
## PLINTHS



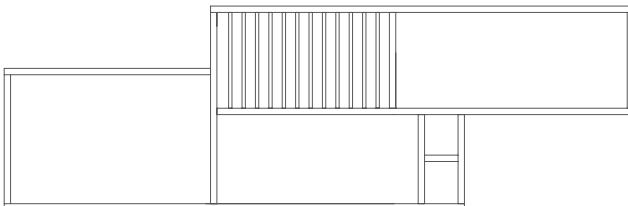
## CANOPY



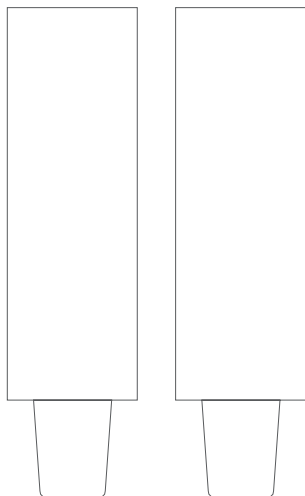
## BACK



## INTERNAL SHELVING



## SIDES



## GRANITE

Fearnley Grand only



## FORMICA/PLYWOOD

Hivehaus Grand only



## KITCHENETTE COMPONENTS

- 1 base unit
- 2 uprights
- 1 back
- 1 canopy
- 1 internal shelving unit
- 4 doors with larder shelves
- 1 granite worktop (Fearnley Grand only)
- 1 Formica & plywood worktop (Hivehaus Grand only)

## ADDITIONAL COMPONENTS

- 1 plinth (front), 2 plinths (left/right)
- 3 IR sensor lights
- 1 solid oak chopping board
- 1 utensils insert (in rh/s drawer)
- 1 sink back (fitted in base unit)
- 1 shelf with 4 chrome shelf keys
- 1 utensils hanging rail with hooks
- Plate rack dowels
- 2 touch up paint and mixing agent

## WHAT'S INCLUDED

### STANDARD APPLIANCES

- Caple microwave/oven
- Stellar 2 zone induction hob
- Caple undermount sink
- Caple 'Swanson' tap
- Full size fridge (fitted in base unit)

### FIXTURES & FITTINGS

- 10mm oak domed plugs
- 8 plinth clips
- 2 internal shelf placement packers
- 4 packets of assembly screws
- Assembly instructions

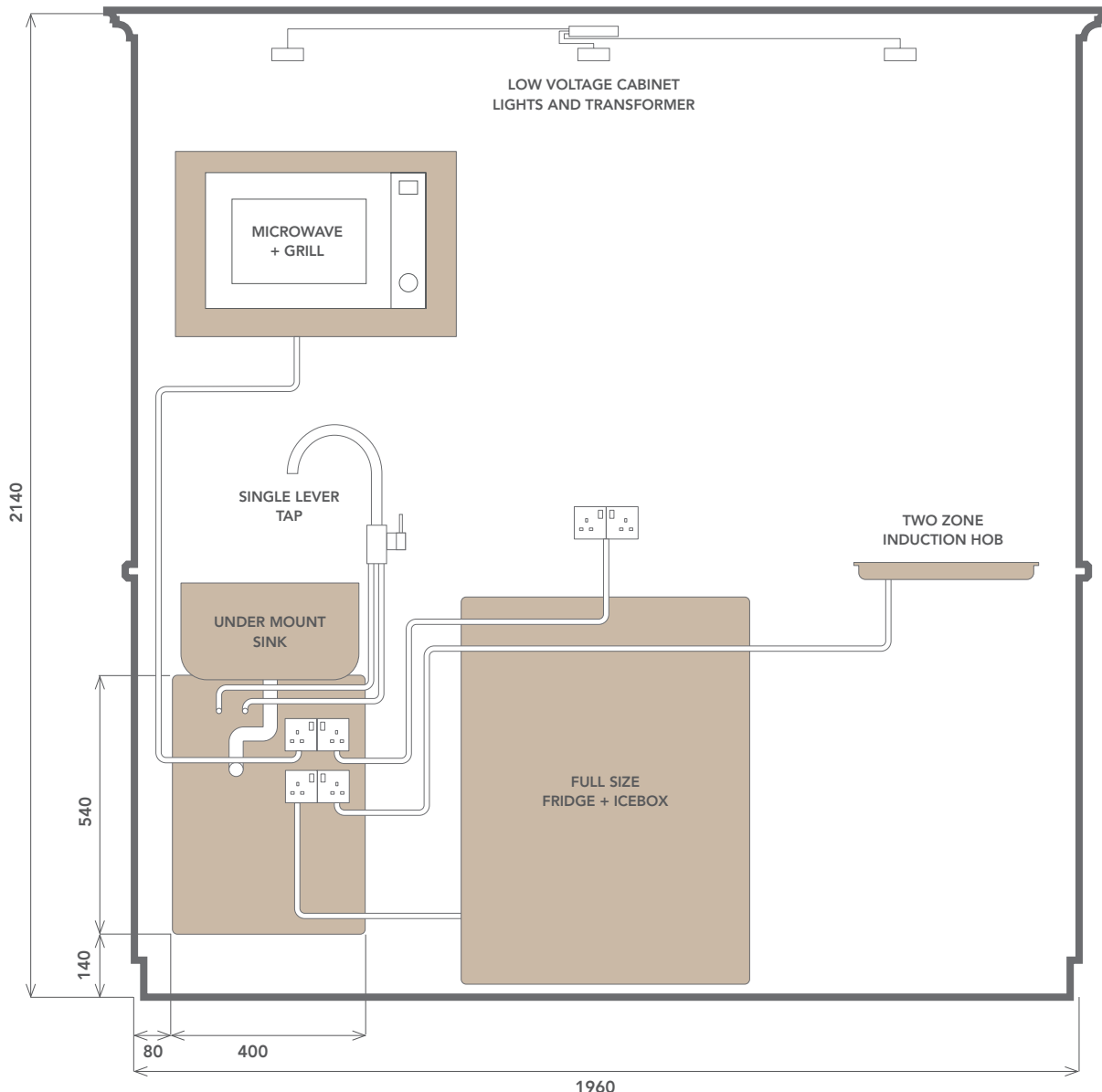
## **POWER SUPPLY & SWITCHING FOR CABINET LIGHTING**

The kitchenette as standard is supplied with low voltage cabinet lighting and a relevant transformer. The information below is only meant as a guide and all works must be carried out by a registered electrician who can ensure all lighting works comply with the electrical regulations within your country.

### **FOR INSTALLATION YOU WILL NEED: *(items not included)***

- 2 people (advised)
- 1 pozidrive 2 screwdriver
- A spirit level
- 1 tube of silicone and an application gun
- A tape measure

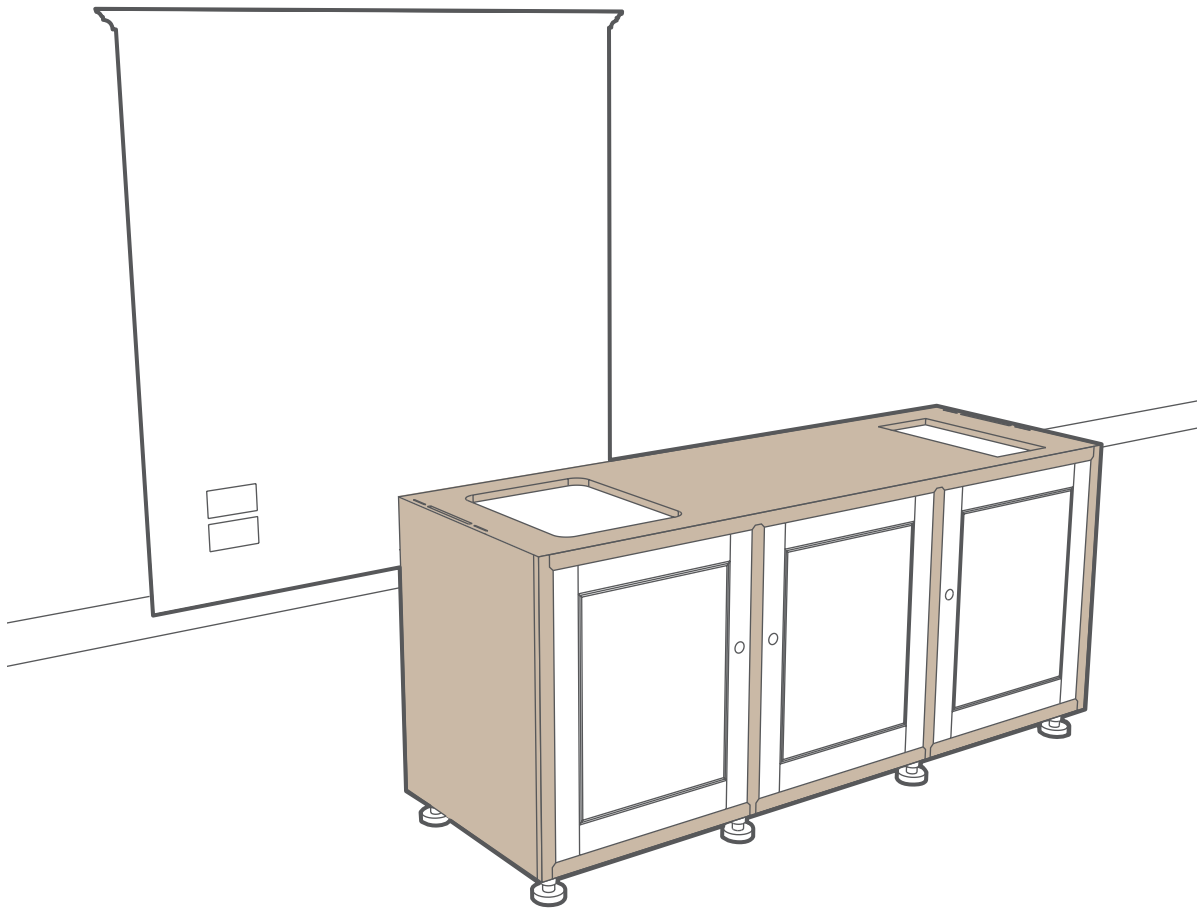
KITCHEN MAKERS



\*It is recommended that all plumbing is carried out by a qualified tradesperson.

**PLEASE NOTE**

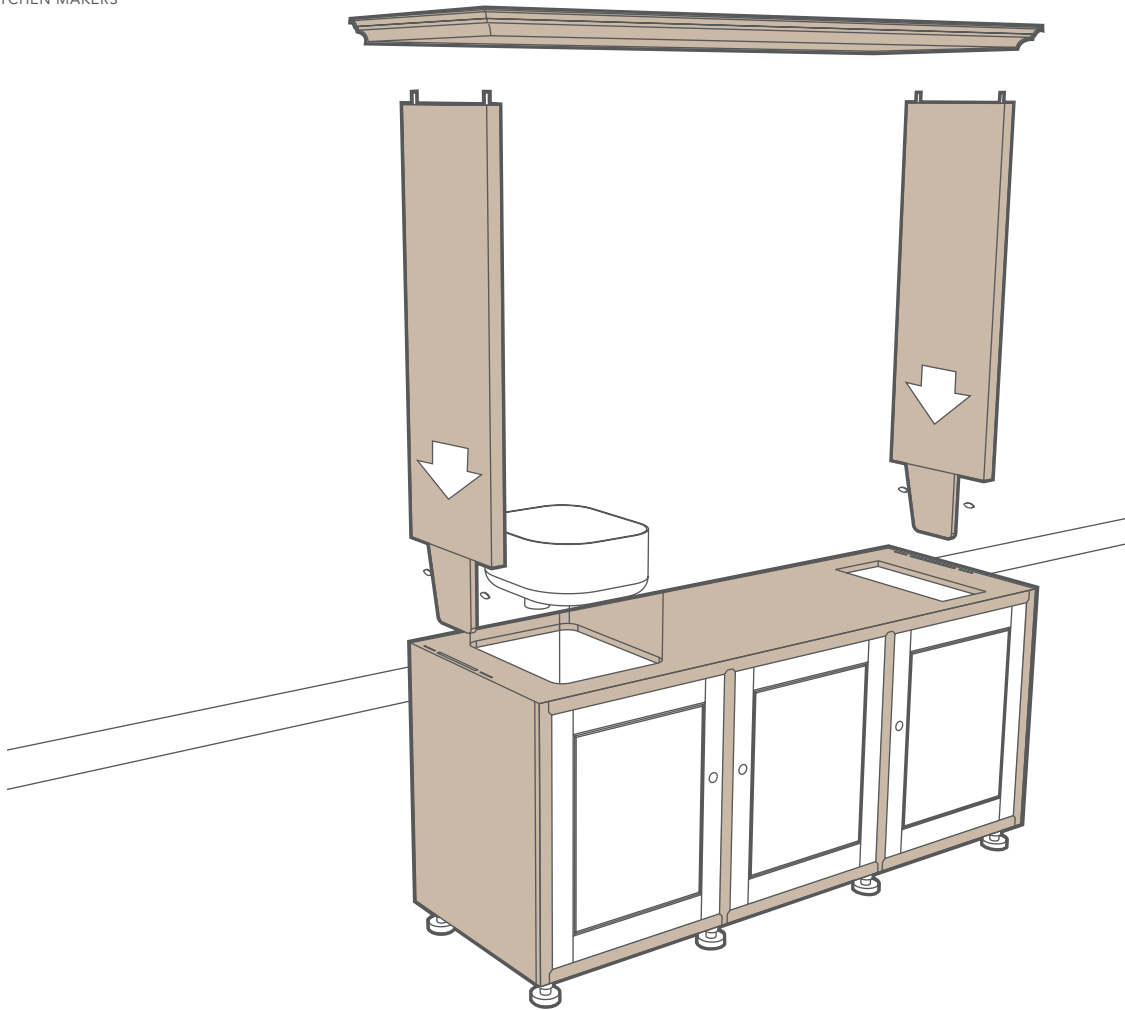
These dimensions show the open area under the sink for the services to be brought through into the cabinet. Sockets can be positioned in the wall behind the kitchenette or wires left long to position sockets in the cabinet during installation. This diagram shows a standard configuration. Services requirements may differ depending on appliance choice.



## STEP 1

Position the kitchenette base directly in front of its final position, approximately 700mm away from the wall.

You will need to work all around the kitchenette during assembly.

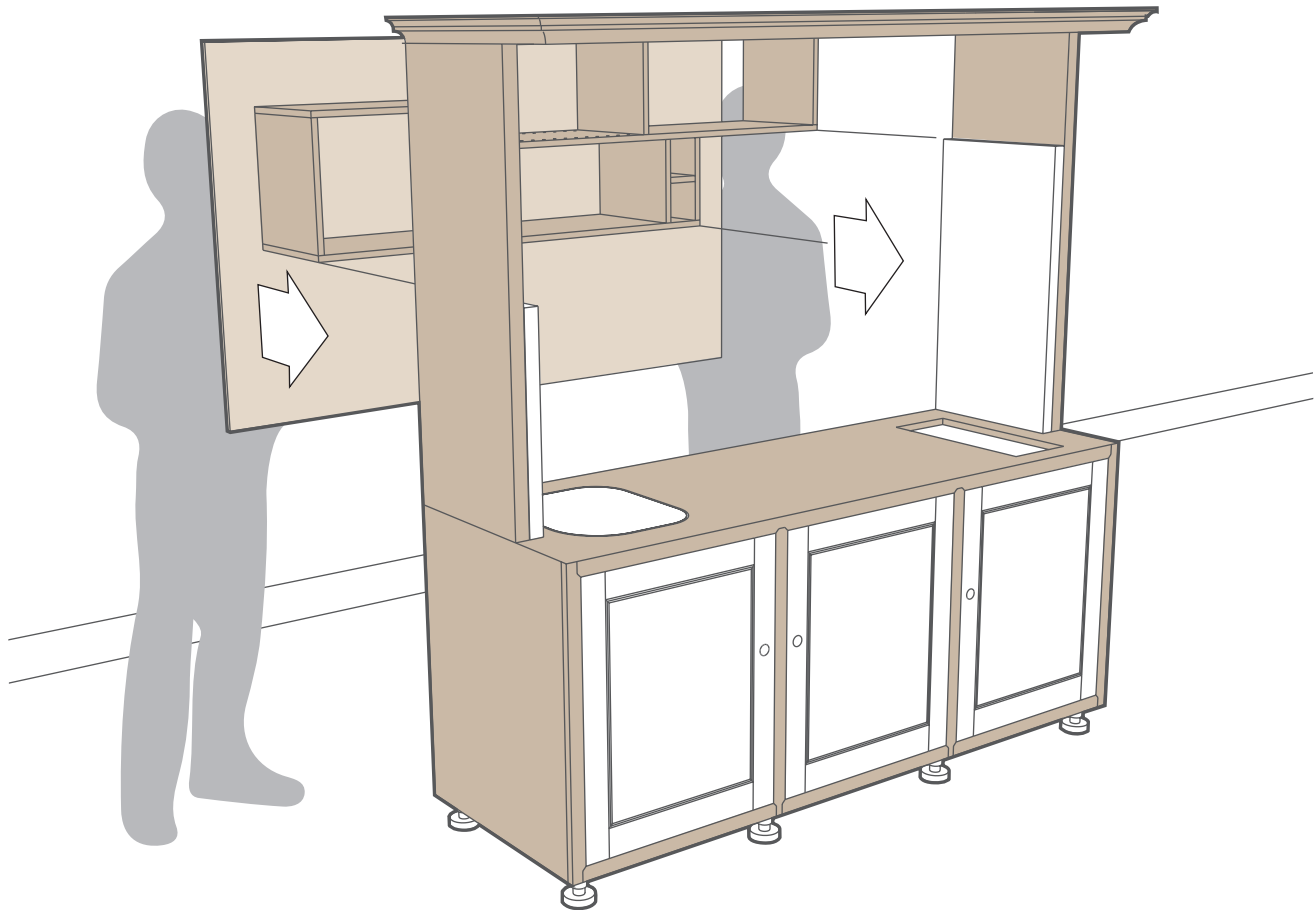


## STEP 2

Position the upper sides and the biscuits into the slots on the top of the kitchenette base. Lift the top canopy over the sides 20 to 30mm forward.

Position the steel dowels in the top edge of the sides into the key hole plates on the canopy, slide the canopy back into the final position.

Place the sink into the recess in the carcass top.



### STEP 3

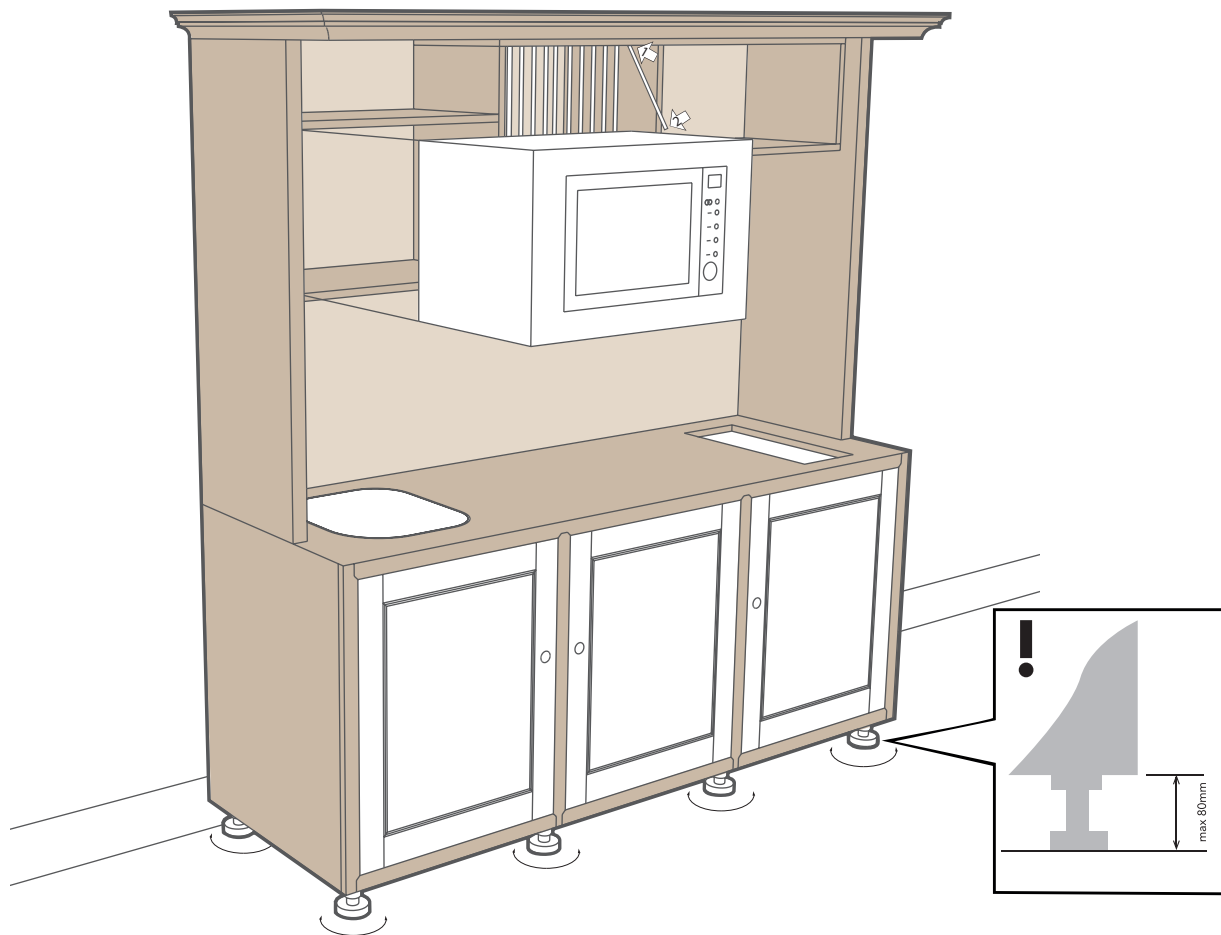
Using a piece of masking tape fix the temporary supports to the inside sides of the upper cabinet. Slide the internal shelving in through the back of the cabinet and rest it on the supports.

First fix the shelving up to the canopy making sure there are no gaps between the 2 components then screw

through the sides.

Remove the temporary supports, these can be discarded then fix on the back panel. This is screwed on through the back and into the sides of the upper cabinet and internal shelving, check all the available positions have screws in.





#### STEP 4

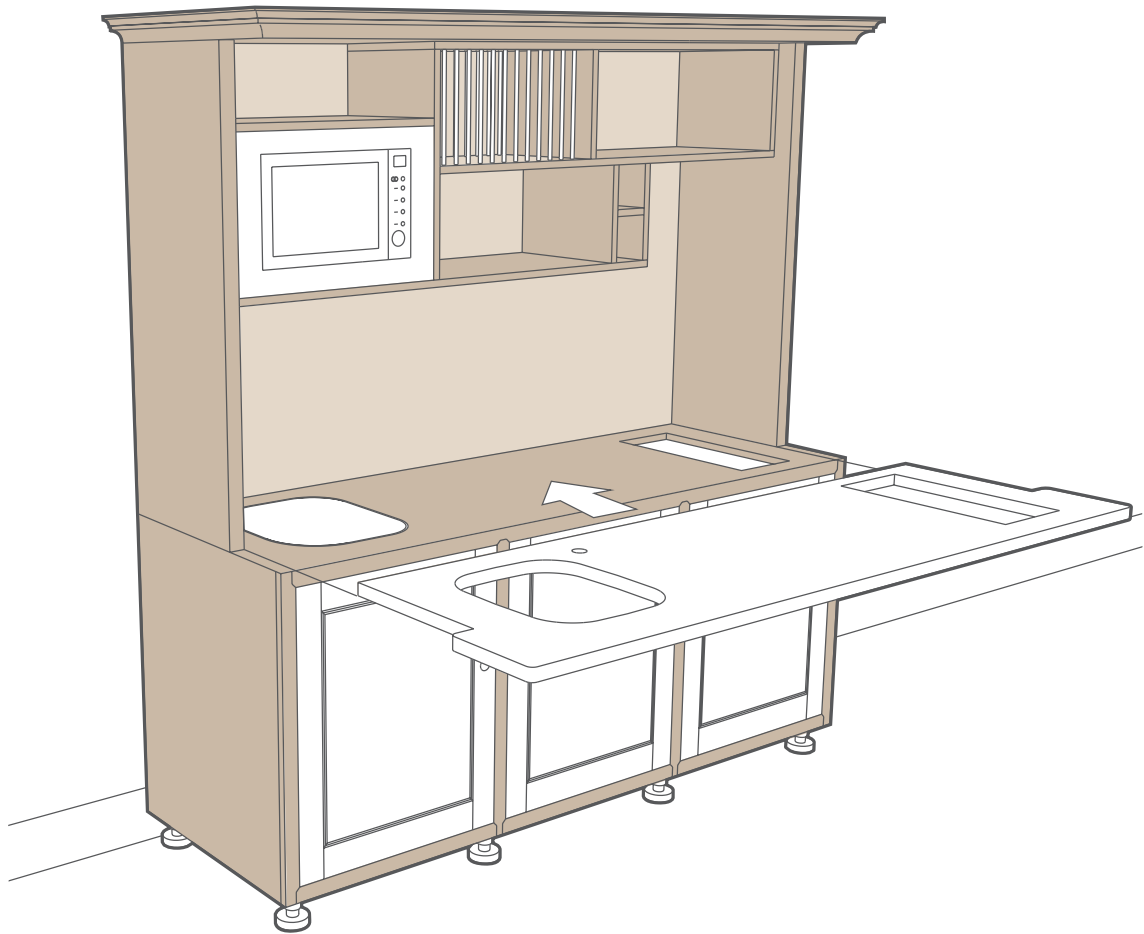
Position the microwave in the shelving and feed the power lead through the hole in the back panel. This will hang down behind the kitchenette for connection later.

Carefully position the kitchenette in its final position and take care to level the kitchenette side to side and front to back using the adjustable feet.

*Please bear in mind the maximum plinth height of 80mm when adjusting the feet*

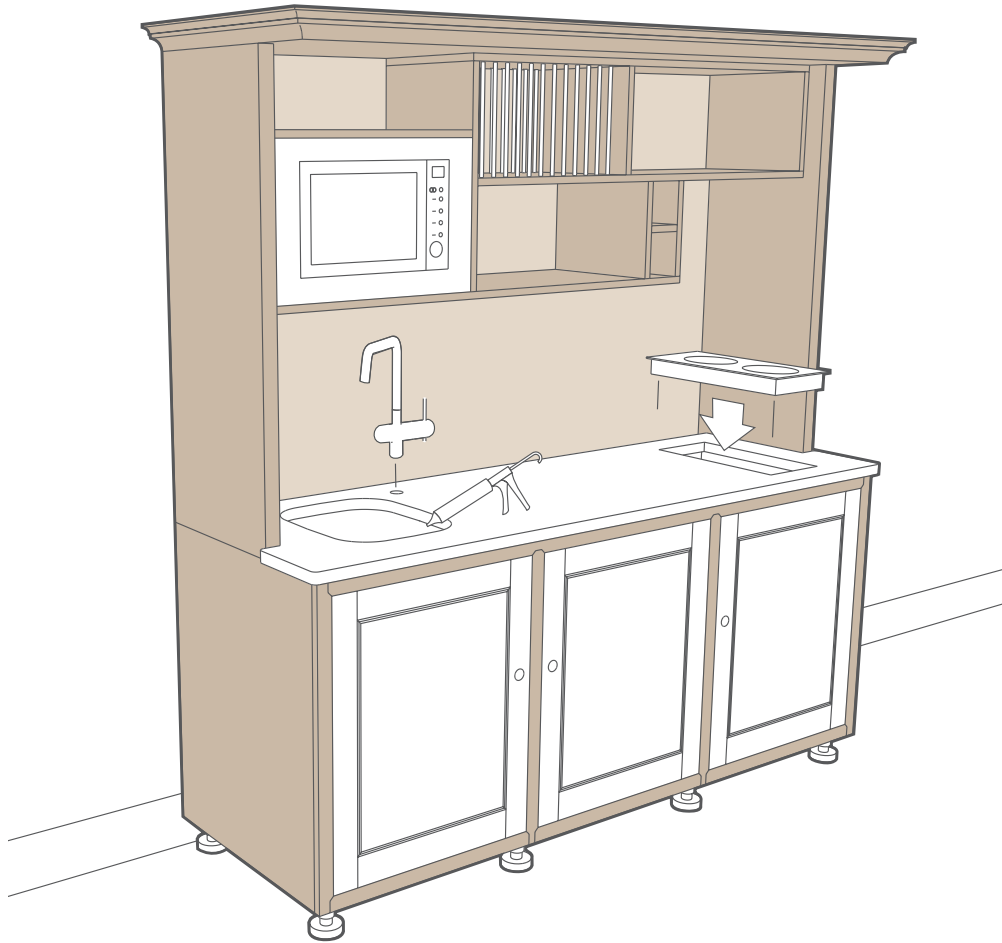
This will ensure that the larder doors will fit squarely in the cabinet.

Fix the kitchenette back to the wall making sure the cabinet is still level in all directions.



**STEP 5**

Carefully slide the granite into position over the sink.



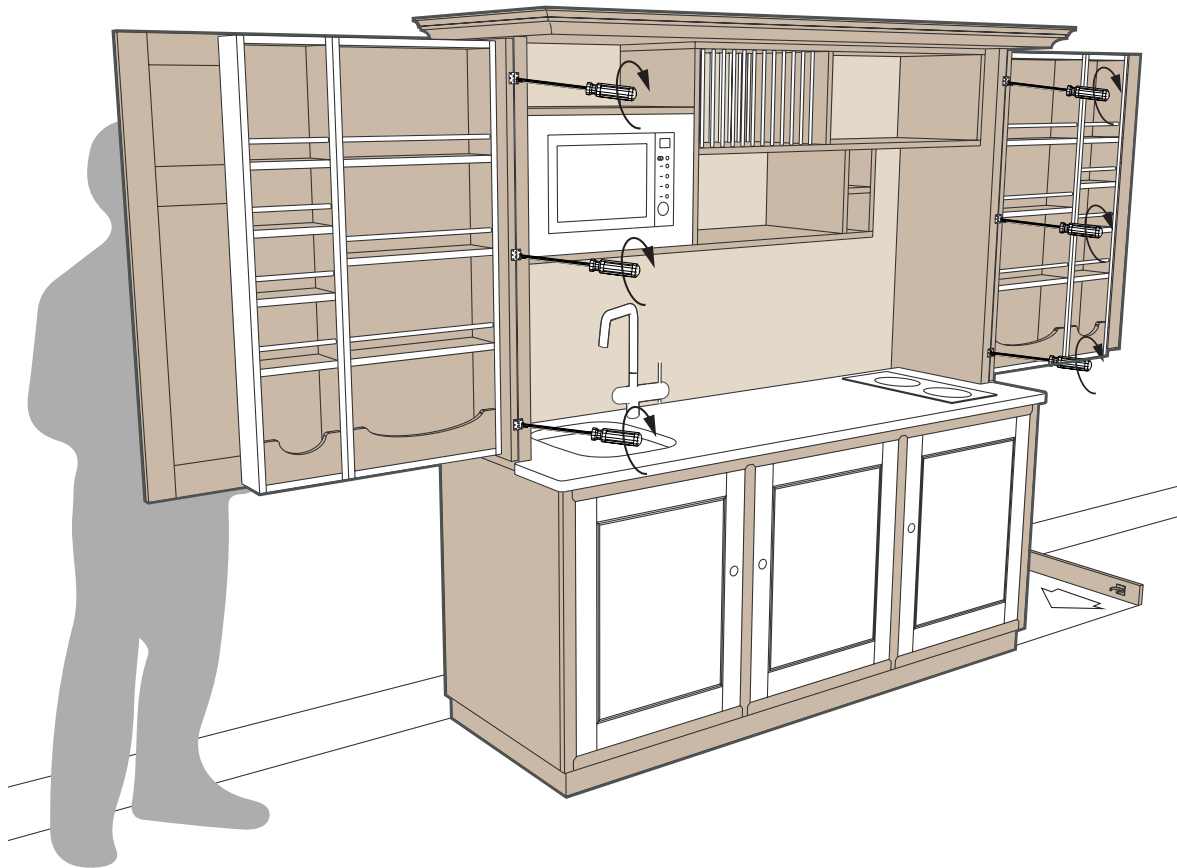
## STEP 6

Fix the tap through the granite and position the hob in its hole in the worktop.

Prior to sealing with silicone, apply masking tape around the upper edge of the sink and around the lower edge of the granite. Now seal with a 5mm silicone bead.

Remove the masking tape and this should leave a neat silicone bead around the sink.

Using the same method, apply masking tape on either side of the join between the granite and the back panel and sides.



## STEP 7

Connect the plumbing and electrics under the sink. The final task is to fix the larder doors into position, you will need another person to assist you at this stage. Fix a screw into the top and bottom hinge and close the doors, check for level, make any small adjustments if needed to level the doors then screw in the remaining

screws taking care not to over tighten.

Align the plinth. You may need to shape the width of the plinth (scribing) to fit neatly against the floor, especially if floor is very uneven. Finally clip plinth into position.

# CULSHAW KITCHENETTES



Tel: 01704 821 076

Online: [www.culshaw.co](http://www.culshaw.co)

Email: [info@culshawkitchens.co.uk](mailto:info@culshawkitchens.co.uk)

Studio: Cedar Farm Back Lane  
Mawdesley Lancashire L40 3SY

Culshaw Ltd ©All Rights Reserved.



Our kitchenette is a patent  
registered international design

  
*Handmade*  
IN BRITAIN  
—◇—

*3 Year Warranty*  
QUALITY  
GUARANTEED  
—◇—

**30** DAY  
MONEY BACK  
*Guarantee*